

Travel Plan

October 2024



Godinton Primary School

Lockholt Close, Ashford, TN23 3JR



DfE number	886-2625
URN	141754
Headteacher	Jill Talbot
School phone	01233 621616
School email	headteacher@godinton.kent.sch.uk
School website	godinton.kent.sch.uk

School Travel Plan coordinator	Jill Talbot
Job title	Headteacher
Contact phone	01233 621616
Contact email	headteacher@godinton.kent.sch.uk

1 Introduction to the school

1.1 Background

Context of the School

Godinton is a popular and well respected primary school set in beautiful grounds in Ashford. We have a strong school ethos unpinning by a well-established set of school values in which we work together to achieve our school vision of providing a nurturing and inclusive environment, alongside a challenging and inspiring learning experience, where everyone works together to support children in reaching their full potential and achieving well deserved success. Despite being a large school with 420 children, mainly from the Godinton Park Estate and surrounding developments, the school has a friendly family feel, often commented upon by visitors to the school. Our children enjoy coming to school, work hard and have positive attitudes towards all areas of school life. They benefit from extensive grounds in which to play and learn including a large field suitable for games and sports, an extensive area of woodland for Forest School activities and a wildlife garden. We have a committed team of staff and Governors, as well as a supportive parent community who work collaboratively to ensure that our children are given an amazing school experience.

Godinton is a two form entry, stand alone academy with an Ofsted rating of good in the last inspection in February 2024.

1.2 Changes at the school

The school is neither moving nor expanding.

1.3 Inter-site travel issues

The school is on a single site, hence has no internal travel issues.

2 Operational hours

2.1 Core hours

School is operational between 8.50 a.m. and 3.20 p.m (3.10 p.m. for children in EYFS). The pedestrian gates open to all pupils at 8.35 a.m. in the morning and children may come into school from this time.

2.2 Overall hours

The school operates a Breakfast Club which is operational from 7.50 a.m. and an After school Club (Night Owls) which runs until 5.45 p.m. The school also runs a range of activities after school for children to participate in e.g. school choir, football and drama. Some after school and early evening activities are also provided by external providers.

3 Staff and pupil numbers

3.1 Overview of staff & pupil numbers

Godinton is a two form entry school with a pupil admission number of 420 (60 per year group). We currently have 417 children on roll.

Godinton employs 78 staff. This includes the Senior Management Team, teachers and teaching assistants and a range of other support staff including administration staff, the pastoral team, midday supervisors and the premises team.

Age range of pupils: 4-11

Total quantity of pupils on roll: 417

Year R	57
Year 1	60
Year 2	60
Year 3	60
Year 4	60
Year 5	60
Year 6	60
Year 7	0

3.2 Current staffing levels

The school employs a total of 78 staff (15 full-time, 63 part-time, 0 working other hours).

3.3 Planned school expansion

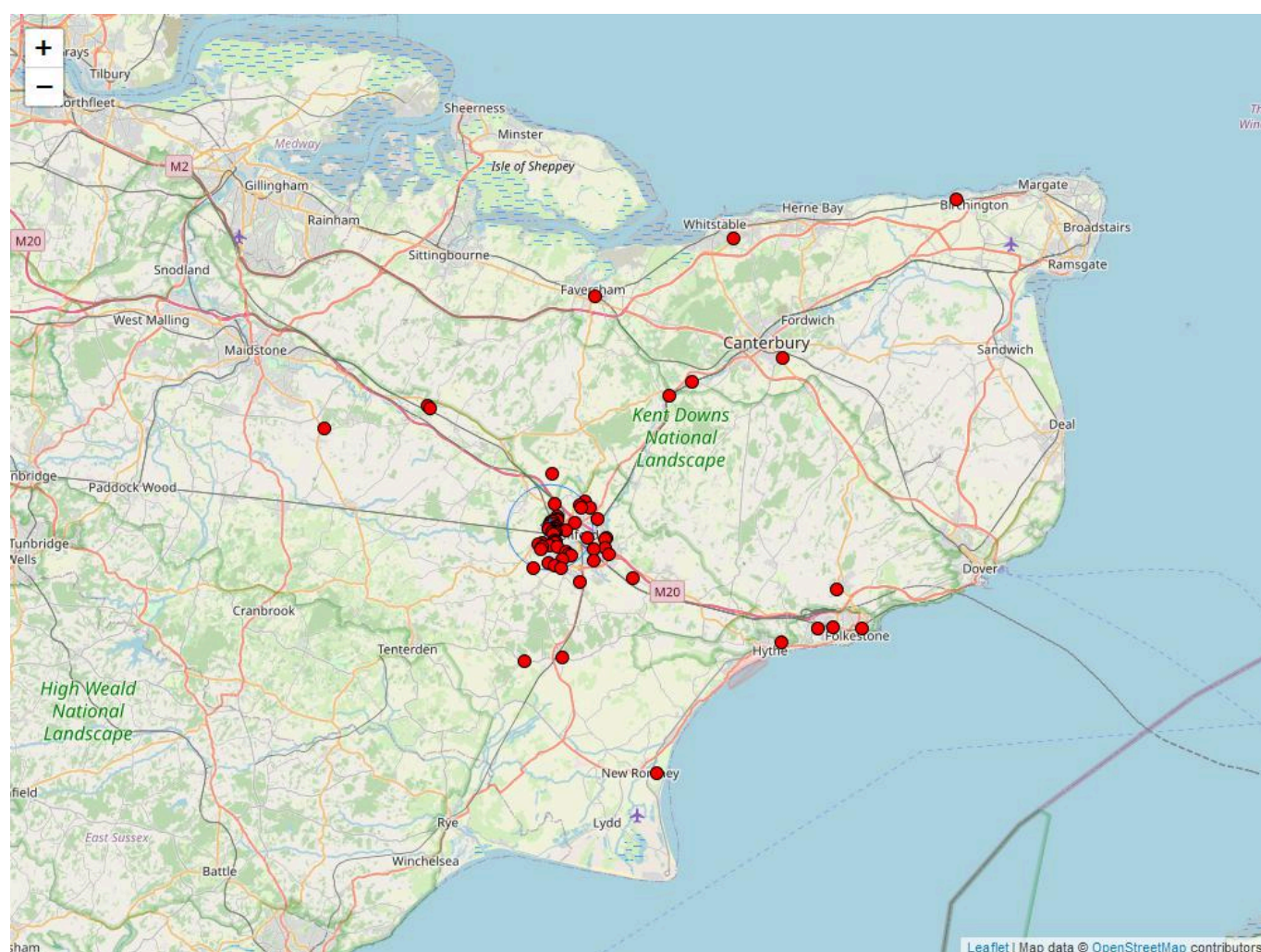
The school is not currently planning to expand.

3.3 SEN pupils with transport needs

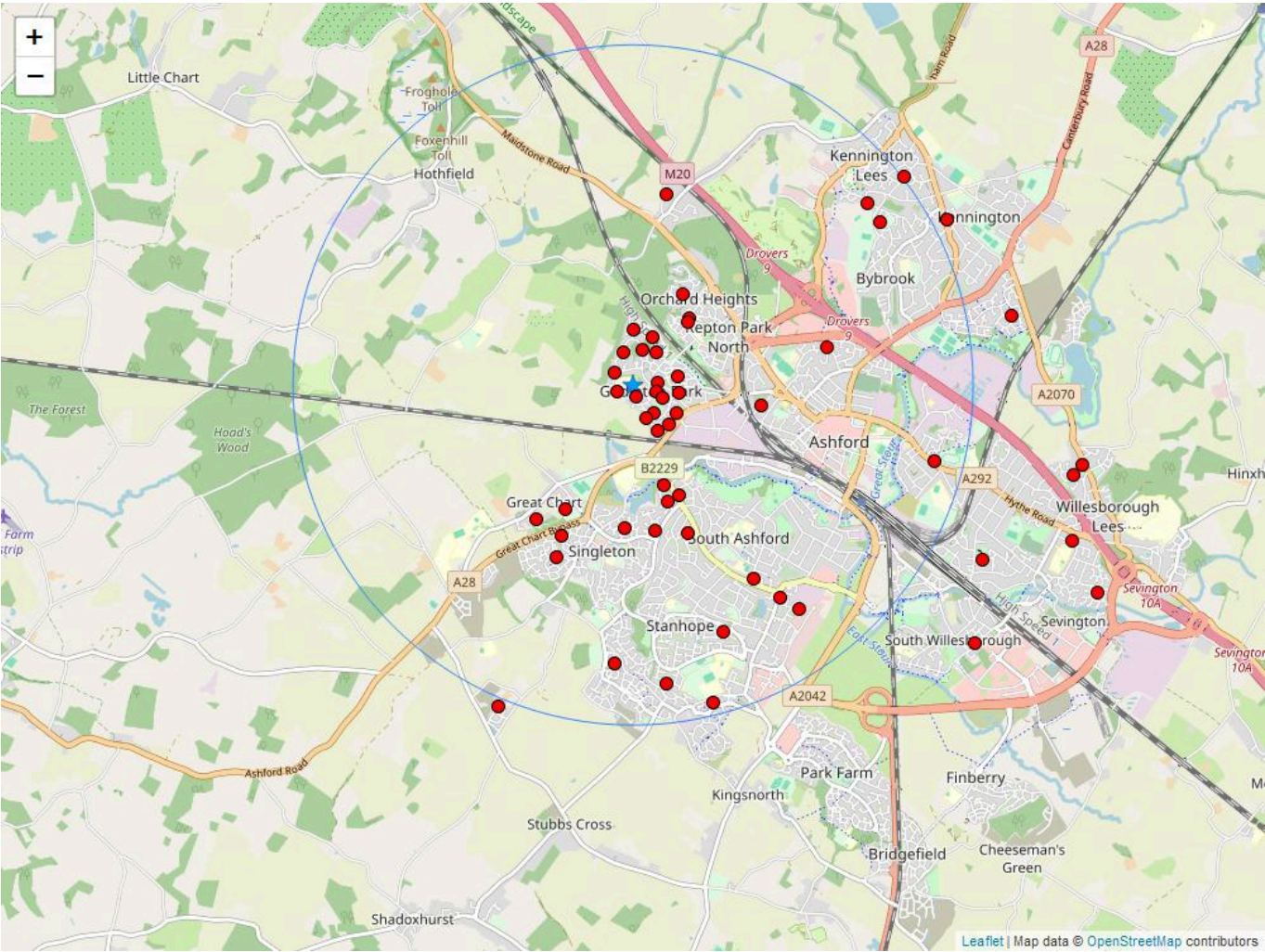
The school has no SEN pupils with specific transport needs.

4 Pupil & staff postcode maps

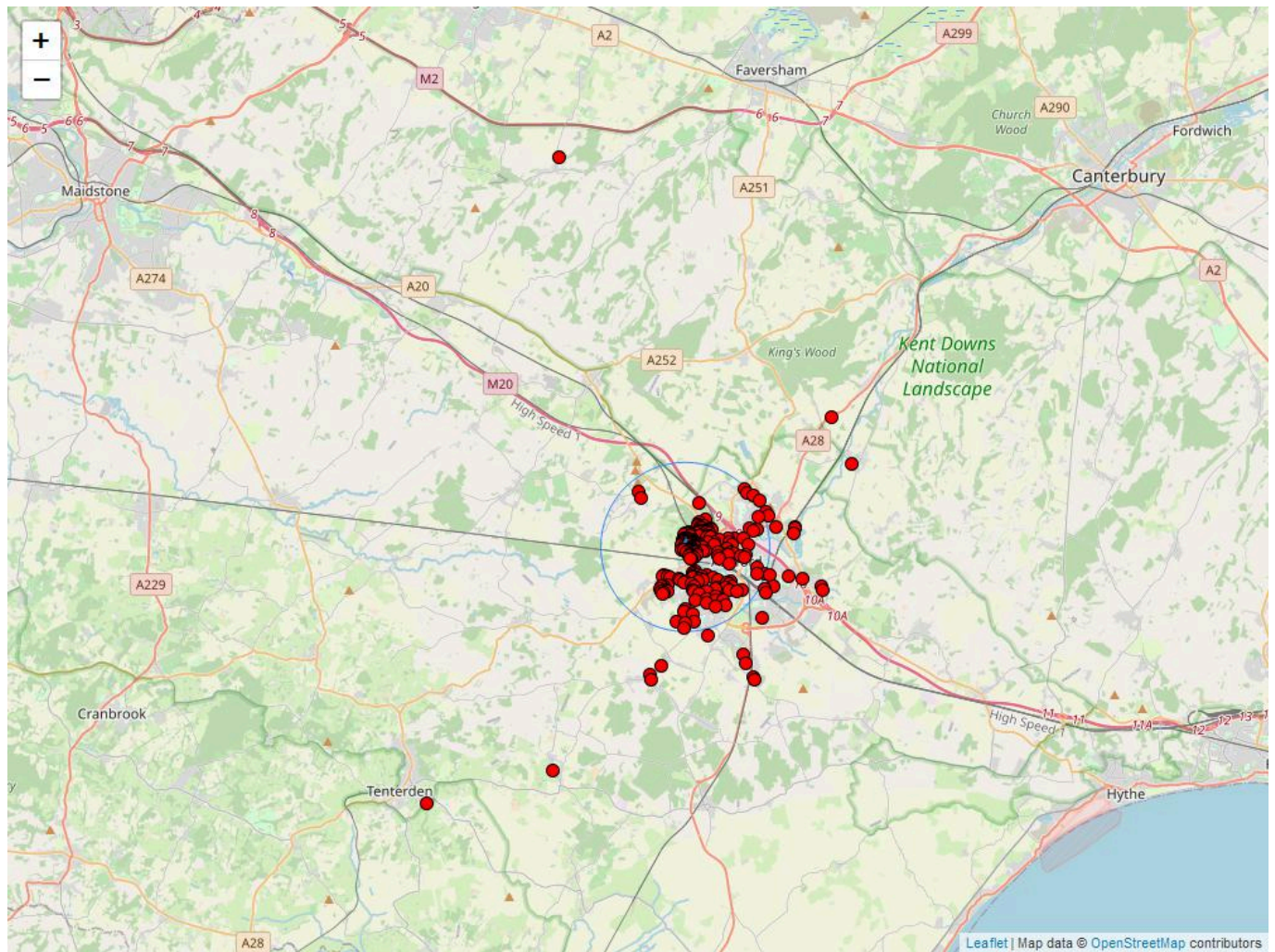
Staff Postcodes - all



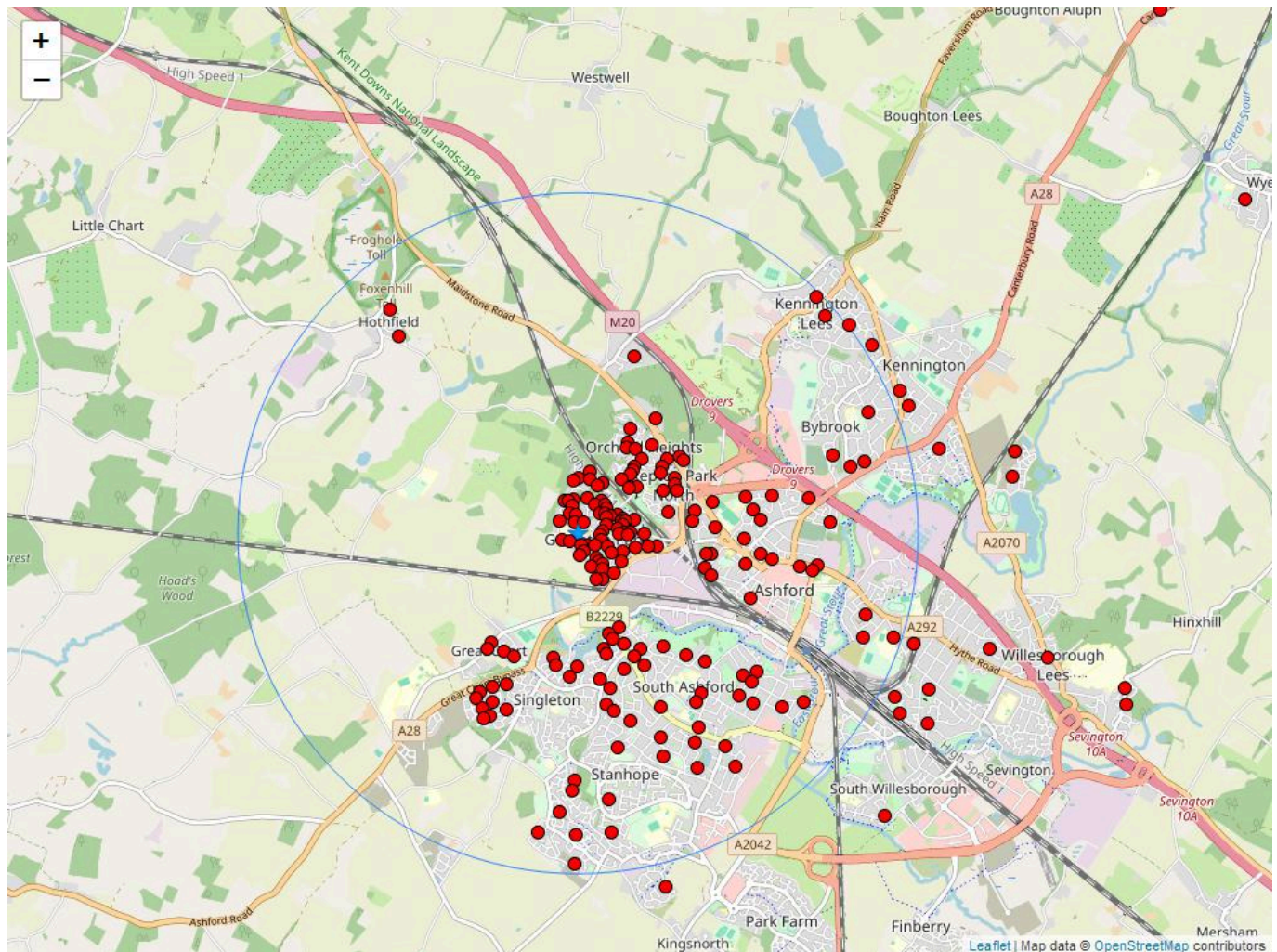
Staff postcodes within a 2 mile radius



Pupil Postcodes - all



Pupil postcodes within a 2 mile radius



5 Travel plan details

5.1 Previous travel plan

The school has no previous travel plan.

5.2 Reason for new travel plan

The school has not had a formal travel plan in place for a number of years although we have always been pro-active in supporting safe ways of travelling to school and sustainable travel.

Much has changed in recent years and we feel that a formal travel plan will more accurately capture the needs of the school and the current issues being faced.

6 Surrounding roads

6.1 Surrounding roads

Surrounding Roads:

Although the Godinton Park Estate can be quiet during the school day, at drop off and pick up times it can be severely congested. There is also an issue with parents being late to pick up, speeding on the local roads.

Lockholt Close – difficulties are described in section two. There are no road traffic markings or restrictions in the cul-de-sac and there is no turning point at the bottom of the cul-de-sac in front of the school gates. Whilst the school has good relationships with our neighbours in Lockholt Close, we do receive frequent complaints about inconsiderate drivers and inappropriate parking including double parking and blocking in residents. We do not encourage parents to park in the close or to use this as a place to drop off their children. Lockholt Close can be particularly busy at nursery drop off and pick up times as well as school drop off and pick up times.

Springwood Drive – At drop off and pick up, inconsiderate parking can cause difficulty in this area. Parents have been noted parking at the junction of Lockholt Close and Springwood Drive making it difficult for pedestrians to cross the road. Cars often speed across this section of road.

A Road Crossing Patrol Officer, used to be stationed in Springwood Drive but this service was removed approximately 8 years ago. There is no dropped curb to allow pedestrians to cross from one side of Springwood Drive to the other. Crossing can be made more difficult due to the presence of parked cars.

Loudon Way - A Road Crossing Patrol Officer is stationed in Loudon Way at drop off and pick up. This is well used by children and parents. Those driving to school are encouraged to park in the community car park and then walk down the footpath to the school. There is an issue with parents not parking in the community car park and parking on the road instead. This is often close to either side of the RCPO point presenting dangers to both pedestrians and other motorists. There are no yellow hazard markings at our RCPO point to prevent motorists from parking here.

Now that there is access from the 28 (Chart Road) to the A20 via the Godinton Park and Repton Manor Estates there is a heavy increase in traffic coming through Loudon Way, using it as a cut through. Many cars travel too fast, as signage alerting motorists to the school is inadequate.

Chart Road - The A28 Chart Road improvement scheme will see the existing stretch of the A28 Chart Road between the 'Tank' and 'Matalan' roundabouts widened into 2 lanes each way. Although work is currently postponed until 2025 when the developer of Chilmington reaches their planning obligation to provide funding to the project, once 400 homes have been occupied, we anticipate that the work will have a significant impact on travel onto the Godinton Park Estate.

6.2 Entrances and exits

Site Access

Vehicle Access

The school is situated at the bottom of Lockholt Close which is a cul-de-sac. Vehicle access is through automated gates which lead into the main school car park. Here there is parking for 45 cars, including 5 disabled bays. The car park is predominantly for use by staff and visitors to the school. A keypad can be used for staff access and all other visitors must press to speak to the main school office or to the Busy Bees Nursery in order to gain entry. The gates are open for parents dropping children off at Breakfast Club between 7.45 a.m. and 8.10 a.m. Only parents of children at the school requiring disabled access are able to park in the school car park during the school day.

Not all houses in Lockholt Close have a garage and with many families now owning more than one car, residents often have to park on the road. There is no residents only parking in Lockholt Close and there are no yellow lines or other parking restrictions. This means that Lockholt Close is often very busy.

Busy Bees nursery is located within the school grounds - it is independent to the school. The number of children attending the nursery and the number of staff employed by Busy Bees has increased significantly in recent years. Parents of children who attend Busy Bees Nursery are able to gain vehicle access to the site by pressing the entry button and speaking to the Busy Bees office. Nursery parents are not meant to park in the school car park as Busy Bees does have its own car park, however this is often busy, with too few spaces and means that parents do park in the school car park which only serves to create further congestion. The school works closely with the nursery team to try and address this issue.

The school car park is not sufficient to accommodate all staff who drive to work. Some staff therefore have to park in the community car park.

Pedestrian Access

Lockholt Close also serves as the main pedestrian access to the school. The school has a second pedestrian access which is via a footpath which connects the school to Loudon Way. The combination of these entrances ensure a steady flow at peak points. Those parking in the community car park next to the village hall, may cross with the Road Crossing Patrol Officer situated in Loudon Way and make their way down the footpath to the school.

During drop off and pick up times, the pedestrian gates remain open for easy access to the site. At all other times the gates remain closed and to gain access, visitors must press the button to speak to the school office.

A further emergency pedestrian gate is located at the far end of the school field and opens onto Springwood Drive. This gate is not operational to parents and children due to limited pavement in this area of Springwood Drive and the potential hazard this therefore presents.

The school does not currently operate a walking bus. Children are encouraged to walk or cycle to school but there are currently no formal incentives in place to support and promote this.

The school engages with the Small Steps Road Safety programme annually. Road safety is built into the school's PSHE scheme.

Access for Cyclists

The school actively encourages children and staff to cycle or scooter to school. Cyclists are able to use the pedestrian entrances and dismount on entry to the school. The school has a number of cycle racks which can be used to store both bicycles and scooters. Cycling and scootering to school is promoted in newsletters. The school has a Cycling Policy.

The school funds sessions led by provider Cycle Circle, to teach our EYFS and Year 1 children how to ride a bike. We offer Bikeability level 1 and 2 training to children in years 4, 5 and 6 and additional funded sessions for children in Year 6 to help them plan and practice cycling to their new schools and locations beyond the Godinton Park Estate. All these sessions are well attended.

This photograph shows the pedestrian gate leading to Loudon Way.



This photograph shows the vehicle access to the school. This is via automated gates (in on the right and out on the left of the photo). The pedestrian gate is located to the right of the vehicle in gate.



This photograph shows the vehicle exit gate.



This photo shows the vehicle entrance gate.



Additional photo showing the pedestrian gate leading to Loudon Way.



Photo showing the footpath leading down past the nursery, to the school.



6.3 Parking restrictions nearby

There are no parking restrictions on adjoining roads.

6.4 Traffic management measures

The school offers no traffic management measures.

6.5 Drop-off on roads outside the school

Parents are not able to drop pupils off on nearby roads.

6.6 Congestion and access problems

The school experiences traffic congestion and/or access problems.

The school does experience traffic congestion and access problems on external roads. Please see the section above for more information. The photographs below highlight some of the most common hazards and difficulties.

This photo shows traffic issues which frequently occur in Lockholt Close where cars are double parked. This often results in residents being blocked in and unable to move their cars.



This photograph shows parking which is typical in Springwood Drive at pick up. Cars can clearly be seen parking at the junction with Lockholt Close.



This photograph shows cars parked along Loudon Way, either side of the RCPO and despite a community car park being available.



This photograph shows cars parked across the junction of Springwood Drive and Lockholt Close. There is no safe place to cross the road in this area, and this type of parking increases the risk of danger.



This photograph shows some of the difficulties experienced in Lockholt Close, where cars are often double parked, blocking in residents.



7 Car parking & usage

7.1 School car park

The school has an on-site car park.

In total, 45 parking spaces are available.

Parking spaces are not managed.

No parking spaces are allocated.

7.2 Drop-off points

The school has no off-site drop-off point.

The school does not have a specific external drop off point however, parents are able to use the community car park in Loudon Way. Children (and parents) may then cross with the road crossing patrol officer and walk down the footpath to the school.

Parents are able to drop pupils off within the school grounds.

Only those parents who require disabled access or are dropping children off at Breakfast Club between 7.45 and 8.15 a.m..may use the school car park.

7.3 Parking on surrounding roads

Members of staff have to park on the surrounding road network.

The school has insufficient spaces for the number of staff now at the school.

8 Pedestrian facilities

8.1 Access by footpath

The school is accessible by good quality footpaths with safe crossing points.

Pathways leading down to the school are adequate. There is a crossing point demarked in the school car park to cross from one side of the car park to the other. However there is no specific crossing demarcations across the entrance to the nursery car park.

8.2 Access difficulties for pedestrians

None.

8.3 Crossing patrols

The school operates crossing patrols.

A Road Crossing Patrol Officer is in place in Loudon Way.

8.4 Highway signs

These signs have been in place for a long time and need updating. Earlier alerts on the estate are needed for both the school and Road Crossing Patrol.

8.5 Walking bus

The school does not have a walking bus.

Walking to school is promoted regularly but no formal walking bus is in place.

8.6 Other walking initiatives

The school does not promote any other walking initiatives.

8.7 Other pedestrian issues

We find that less people walk to school when the weather is wet. Parents have commented that the school does not have many places to shelter on these days whilst waiting for children to come out of school. They then get even more wet if they have to walk home.

9 Cycling & scootering

9.1 Pupil scootering

Some pupils (13) scooter to school.

This number is distributed across all year groups.

9.1a Scooter parking/storage

No scooter parking/storage is provided.

The school does not have any specific parking for scooters - children can however park scooters in the cycle racks which are located at the front of school.

9.1b Encouragement & promotion of scootering to pupils & parents

Scootering is encouraged and/or promoted.

Through newsletters.

9.2 Pupil cycling

Some pupils (15) cycle to school.

The children who cycle to school are mainly in KS2. The number of children cycling to school does increase in the summer months and following on from Bikeability training.

9.3 Staff cycling

Some staff (2) cycle to school.

A number of staff would consider cycling to school.

9.4 Cycle routes/lanes

The school site is not accessible by external cycle routes/lanes.

9.5 Cycle parking

Cycling parking (20 places) is available.

Location of cycle parking: At the front of school. They are located within the site line which is secure during the school day.

Some cycle racks are covered.

No cycle racks are secure.

No cycle racks are lit.

All cycle racks are near building entrances.

9.5a Utilisation of cycle parking

Our cycle racks are old but do provide cover for approximately 18 bikes. The surface of the cycle storage can get muddy in wet weather and something more substantial could do with being put in place.

This photograph shows the current cycle storage which is located at the front of the school.



9.6 Cycle training

The school accesses cycle training from Cycle Circle.

9.7 Encouragement & promotion of cycling

Cycling is encouraged and/or promoted.

Through Bikeability training and newsletters. The school has a Cycling Policy.

9.8 Other cycling issues

The school funds sessions led by provider Cycle Circle, to teach our EYFS and Year 1 children how to ride a bike. We offer Bikeability level 1 and 2 training to children in years 4, 5 and 6 and additional funded sessions for children in Year 6 to help them plan and practice cycling to their new schools and locations beyond the Godinton Park Estate. All these sessions are well attended.

10 Public transport

10.1 Use of public transport

2 members of staff use public transport (one bus and one train)

10.2 Obstacles to use of public transport

The G Bus serves the Godinton Park Estate. The timings of the bus mean that parents and children have to wait as they do not fit in with the timings of the school day.

10.3 Promotion of public transport

No due to reasons described above.

10.4 Bus stops and services

10.4a Bus stops within 400m of site entrances

The nearest bus stop is in Loudon way.

10.4b Services currently serving these bus stops

The G Bus.

10.4c Shelters at these bus stops

The shelters are typically clean.

The shelters are well lit.

The shelters have timetables or live travel information.

The shelters have seats.

10.5 Railway stations and services

There are no railway stations near the site.

11 Contract transport

11.1 School buses

There are no dedicated school buses.

11.2 Taxis

Taxis, whether for SEN or other students, are not a regular part of the school day.

11.3 Parking issues related to contract transport

None.

11.4 Other contract transport issues

None.

12 Current travel issues

12.1 Other travel issues

Main Travel Issues

Travel Problems and Underlying Difficulties

The safety implications due to increased traffic following the expansion of the Godinton Park Estate and Repton Manor Estate has not been adequately addressed. The measures put in place by the Council at nearby schools built in the last 10 years are superior to those in place on Godinton Park creating a discrepancy in facilities.

Need for improved road markings and signage in Loudon Way to alert motorists to the school and to deter motorists from parking on the road, rather than in the community car park e.g. yellow zig zag markings. This is particularly hazardous either side of the RCPO.

Need for improved crossing points in Springwood Drive to facilitate safer crossing points from one side of Springwood Drive to the other. At present, some people are deterred from walking as there is no safe crossing point e.g. dropped curb, road markings to deter motorists from parking across junctions, additional RCPO.

Need for markings in front of the school to deter motorists from coming down into the cul-de-sac to either drop off or pick up their children. Congestion in the cul-de-sac has increased due to the success of Busy Bees Nursery.

A limited number of "hard liners" who will insist upon using their cars regardless and parking as close to the school doors as possible despite everything we ask.

12.2 New & current travel issues

1.To deter irresponsible parking in the roads outside of school, creating a safer environment which will encourage more people to walk to school. Contact KCC regarding the need for parking restrictions/ renewed yellow lines. Order banners and leaflets from the "Responsible Parking" website to complement our new campaign to make children and parents aware of the dangers of poor parking.

2.To encourage a greater take-up of 'active' travel amongst staff and children. Review current bicycle storage and scooter pods and how funding may be able to be accessed to improve this. To continue to cycling and walking to school through various means.

3. Increased traffic in Lockholt Close due to rising numbers of children attending Busy Bees nursery. This has grown considerably in recently years with an increased number of children on roll and more staff.

13 Travel survey results

modal split percentages (actual) - pupils

	Feb 2024
walk	44.6
park & walk	8.2
cycle	3.7
scoot/skate	3.5
bus (all types)	
public bus	0.0
school bus	0.0
rail	0.0
car share	0.2
car (alone)	39.6
other	0.2

NB rounded percentages may not add exactly to 100.0%

modal split percentages (ideal) - pupils

	Feb 2024
walk	28.0
park & walk	10.4
cycle	25.2
scoot/skate	11.6
bus (all types)	
public bus	1.5
school bus	2.7
rail	0.0
car share	4.5
car (alone)	16.1
other	0.0

NB rounded percentages may not add exactly to 100.0%

modal split percentages (actual) - staff

	Feb 2024
walk	20.0
cycle	3.1
bus	0.0
train	0.0
car (alone)	73.8
car share	1.5
other	1.5

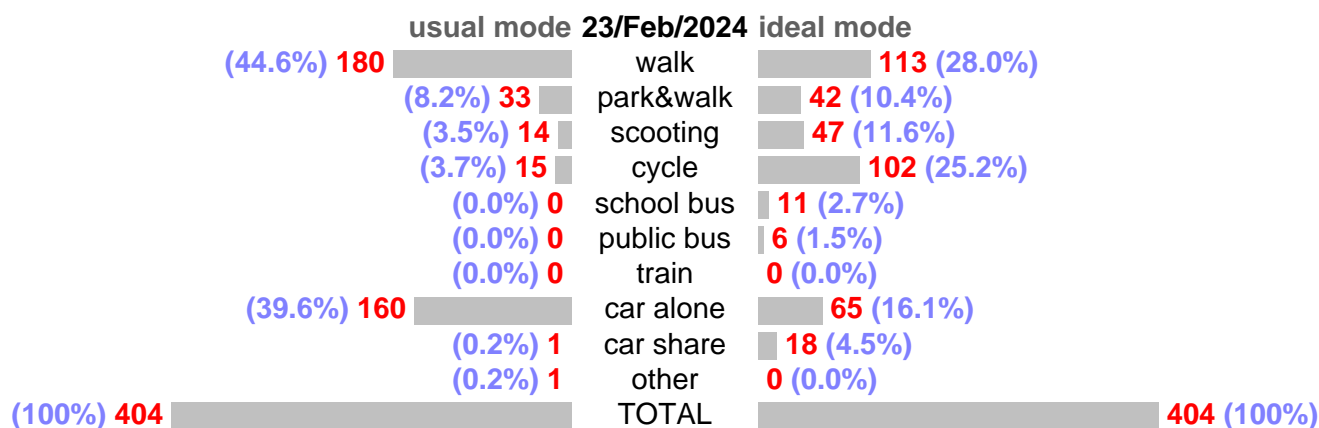
NB rounded percentages may not add exactly to 100.0%

modal split percentages (ideal) - staff

	Feb 2024
walk	27.7
cycle	10.8
bus	0.0
train	0.0
car (alone)	56.9
car share	4.6
other	0.0

NB rounded percentages may not add exactly to 100.0%

13.1 Barchart of latest pupil actual/ideal survey



14 Objectives

1	<i>Irresponsible parking</i> <i>To deter irresponsible parking in the roads outside of school, creating a safer environment which will encourage more people to walk to school.</i>
2	<i>Walking and Cycling to School</i> <i>To encourage a greater take-up of 'active' travel amongst staff and children.</i>

15 Targets

A	<i>increase % of pupils arriving/departing solely on foot from 45% (Feb 2024) to 50% by Feb 2025</i>
B	<i>increase % of pupils travelling by bicycle from 4% (Feb 2024) to 8% by Feb 2025</i>
C	<i>increase % of pupils travelling by scooter/skating from 4% (Feb 2024) to 6% by Feb 2025</i>

16 Actions

Summary:	Tasks:	Status:
Assemblies <i>[lead: Jill Talbot]</i> Class assemblies to be built into the school timetable to promote walking and cycling to school and the dangers of hazardous parking. Consider whether any external speakers can be involved in this.	Assemblies specifically focusing on the benefits of walking, cycling or scootering to school to be built into the yearly plan for school assemblies. Children from the school's Mini Management Team (school council) will be involved in planning, delivering and promoting this. Look into what external speakers may be able to come into school to help deliver these important messages e.g. road crossing patrol. Mini Management team to work on a campaign to help promote these messages to parents.	not started
Bikeability (Schools Games Organisers) <i>[lead: Hayley Partridge]</i> Children in Years 4, 5 and 6 to participate in Bikeability training. Transition ride training to be delivered to Year 6 children. EYFS and Year 1 to participate in balance bike and learn to ride cycle sessions.	Yearly plan to be implemented for cycle training in 2024-25, similar to that of 2023-24. Benefits of cycling to school to be promoted to parents through social media and regular school newsletters.	not started
Road Safety Education <i>[lead: Sarah Stein]</i> Year 3 children to participate in the Small Steps Road Safety Programme.	Sessions to be arranged and completed. Sessions to be promoted to parents.	not started
Storage <i>[lead: Jill Talbot and Claire Williams]</i> To consider options for the improvement of cycle storage at the school.	To explore options for cycle and scooter storage. To investigate opportunities for match funding / grant funding.	not started
Walk to School Week <i>[lead: Jill Talbot]</i> To develop the school's promotion of walking to school through specific walk to school initiatives e.g. walk to school weeks or walk once a week challenges.	Mini Management Team to take a lead in promoting this to children and parents in order to help increase the number of children who walk to school on a regular basis. Regular reminders sent out to parents via ParentMail as well as regular newsletters in order to help parents to see the benefits of walking to school.	not started
Zig Zag Enforcement <i>[lead: Jill Talbot]</i> To deter irresponsible parking in the roads outside of school, creating a safer environment which will encourage more people to walk to school.	<ul style="list-style-type: none"> • Contact KCC regarding the need for parking restrictions/ renewed yellow lines. • Order banners and leaflets from the "Responsible Parking" website to complement our new campaign to make children and parents aware of the dangers of poor parking. Ensure regular communication with parents in order to highlight the dangers of hazardous parking through ParentMail communications and newsletters.	not started

17 Monitoring and reviews

The Travel Plan will continue to be monitored closely by the school, and reviewed on an **annual** basis.

The school agrees to complete a brief annual review of this travel plan **and** a pupil hands up survey at least on an annual basis, or when requested by KCC. The hands up data and review will be fed into KCC's Travel Plan Management System. This will be led by Jill Talbot.

The review will take into account all pupils' needs arising from new developments in education and transport provision. A more detailed review will be carried out should the school seek planning permission for further development.

This Travel Plan has been agreed and signed up to by the following people, who agree to the plan being viewed publicly.

Headteacher	<i>Jill Talbot</i>	8/Oct/2024
Chair of Governors	<i>Steve King</i>	8/Oct/2024